

SCRAA

**Proposed Revision
SCRAA Joint Powers
Agreement**



Fundamental Governance Issues

Purpose and Powers



Purposes (Proposed)

SCRAA shall:

- Seek to encourage cooperation and coordination for all stakeholders
- Function as an information clearinghouse
- Develop and adopt a vision for aviation in Southern California
- Develop a regional aviation plan on a five year basis
- Function as an advocate for federal, state and local legislative changes to promote and support regionalization for air traffic operations
- Conduct joint planning and marketing efforts

Purposes (Proposed)

continued....

- Formulate ideas/strategies to promote regional dispersion of air traffic, both passenger and cargo
- Promote regionalization of air traffic among Southern California airports
- Promote the improvement of on- and off-site ground access facilities that link to the regional transportation system
- Document and monitor airport planning in Southern California
- Submit joint applications with member jurisdictions for state and federal grants for ground transportation and/or airport related projects

Powers (Proposed)

Current SCRAA powers are listed in §5 of the JPA

Powers recommended for **DELETION** include:

- Acquiring and operating airports and airport facilities (subsections (a),(d)(1),(d)(13), and (d)(15))
- Issuance of revenue bonds (subsections (c) and (d)(9))
- The power to grant franchises and leases for airport facilities (subsection (d)(10))
- Establishment of rules governing use of airport facilities (subsection (d)(11))
- Eminent domain power (subsection (d)(14))
- Acquisition of parking facilities, roads, etc. (subsection (d)(16))
- Owning and operating aircraft (subsection (d)(18))

Powers (Proposed)

Current SCRAA powers are listed in §5 of the JPA

continued...

Powers recommended for **RETENTION** include:

- Execute contracts
- Lease office space
- Hire employees including legal counsel
- Sue and be sued
- Prepare plans and reports, including a regional aviation plan
- Apply for state and federal grants
- Act to promote commerce and tourism
- Establish a treasury
- Adopt a budget

Membership & Governance

Five Options



Option I

Add Board Members & Alternates

- Two voting Board members (and alternates) from each county and from the City of Los Angeles

Example: The additional voting Board member could represent airport management or an airport community within the respective jurisdiction

Option I –

Add Board Members & Alternates

LOS ANGELES COUNTY

(2)

ORANGE COUNTY

(2)

RIVERSIDE COUNTY

(2)

SAN BENARDINO COUNTY

(2)

LOS ANGELES CITY

(2)

SCAG

(Non-voting Member)

IMPERIAL COUNTY

(2)

SAN DIEGO COUNTY

(2)

SANTA BARBARA COUNTY

(2)

VENTURA COUNTY

(2)

Option II

Could be done in addition to Option I

- Retain current voting Board membership with member counties and the City of Los Angeles as the Executive Committee while creating various SCRAA standing committees where committee members would have voting rights only within their respective standing committees to make recommendations to the Board.

Standing Committees may include:

- Air operations
- Ground transportation
- Local municipalities/Government entities
- Various committees of technical experts

Option II

Could be done in addition to Option I

continued...

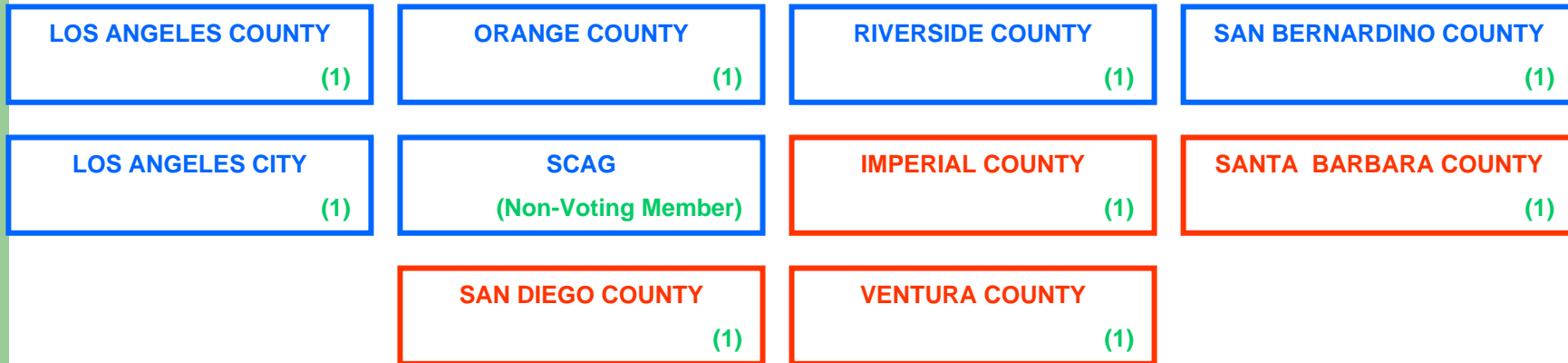
Standing committee members could include:

- Associate Members (expanded definition) to include:
 - Airport management
 - Official airport sponsors/Owners
 - Municipalities who are host cities to airports
 - Municipalities impacted by airport operations within the noise contours of a commercial airport
 - Municipalities expressing an interest in aviation
- Technical Advisors/Experts (Voting/Non-Voting?)
 - Federal Aviation Administration
 - Transportation planning agencies
 - Commercial airlines
 - Air cargo representatives

Option II –

Add Executive Board Members & Alternates

Add Standing Committees with Associate & Technical Members



STANDING COMMITTEES

ASSOCIATE MEMBERS

- Airport Management
- Airport Sponsors/Owners
- Host Municipalities
- Impacted Municipalities
- Interested Municipalities

TECHNICAL ADVISORS/EXPERTS

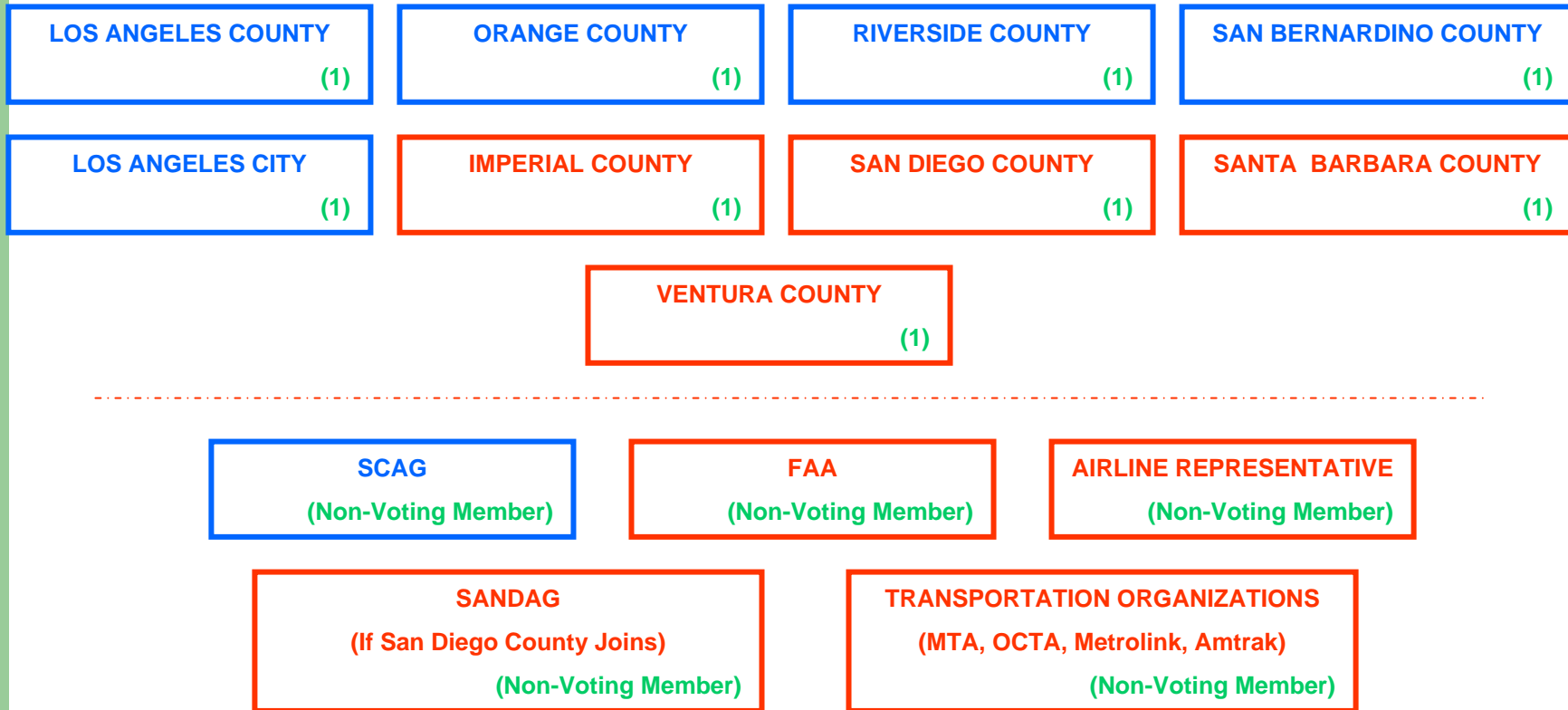
- Federal Aviation Administration
- Transportation Planning Agencies (MTA, Calif. High Speed Rail)
- Commercial Airlines
- Air Cargo Representatives

Option III

Non-Voting Board members

- SCAG is currently the only non-voting member
- Expand Non-voting members:
 - FAA, Regional Director or his designee
 - Representative(s) for the airlines association(s) with international and domestic operations
 - If San Diego County joins as a voting member, SANDAG should be invited
 - Representative from transportation organizations

Option III – Add Non-Voting Members



Option IV-

Expand Board Membership

- Add the following Board Members:
 - All Counties and Cities that operate commercial airports in Southern California Region
 - All Counties and Cities that host but do not operate a commercial airport in the Southern California Region
 - All Counties and Cities that own commercial airports within the Southern California Region.
 - All Joint Power Authorities or similar type agencies that operate commercial airports in the Southern California Region

Option IV –

Add Executive Board Members & Alternates for all Municipalities and/or Local Government Entities that Own/Operate/Host Airports in Southern California

| | | | | |
|-----------------------------|-----------------------|----------------------|------------------------|-------------------------|
| L.A. Co. (1) | Orange Co. (1) | Riverside Co. (1) | Sn.Bern. Co. (1) | Imperial Co. (1) |
| S. D. Co. (1) | Sta. Brba. Co. (1) | Ventura Co. (1) | City Burbank (1) | Imperial City (1) |
| City L.A. (1) | City L.B. (1) | City Ontario (1) | City Oxnard (1) | City Palmdale (1) |
| City Plm Spr (1) | City S.B. (1) | S.D. City (1) | City Sta. Brba. (1) | City Victorville (1) |
| B/G/P JPA (1) | LAWA (1) | P/R/MV JPA (1) | SBIAA JPA (1) | SDCRAA (1) |
| SCAG (Non-Voting Member) | | | | |

Option V –

Two Tiered Structure

- This option proposes a two tiered organizational structure:
 - *Executive Committee*
 - *Three Standing Committees*

*Executive Board can appoint other committees as needed

Option V –

Executive Committee

continued....

- A Board consisting of one voting representative and alternate for each of the 8 Counties in Southern California and one for the City of Los Angeles
 - Executive Board Members must be elected officials

Option V -

Three Standing Committees

continued....

- Air Operations
- Local Municipalities/Government Entities
(may be split into separate committees)
- Ground Transportation

Option V -

Three Standing Committees

continued....

- Associate Members of the Standing Committees must be an elected official and/or appointed member of a public agency
- The Chairperson of each Standing Committee must be an elected official and/or appointed member of a public agency
- The Vice Chair of each can be either an elected official and/or appointed member of a public agency
- The term of office for either Chairperson or Vice Chair shall not exceed two (2) consecutive years

Option V -

Three Standing Committees

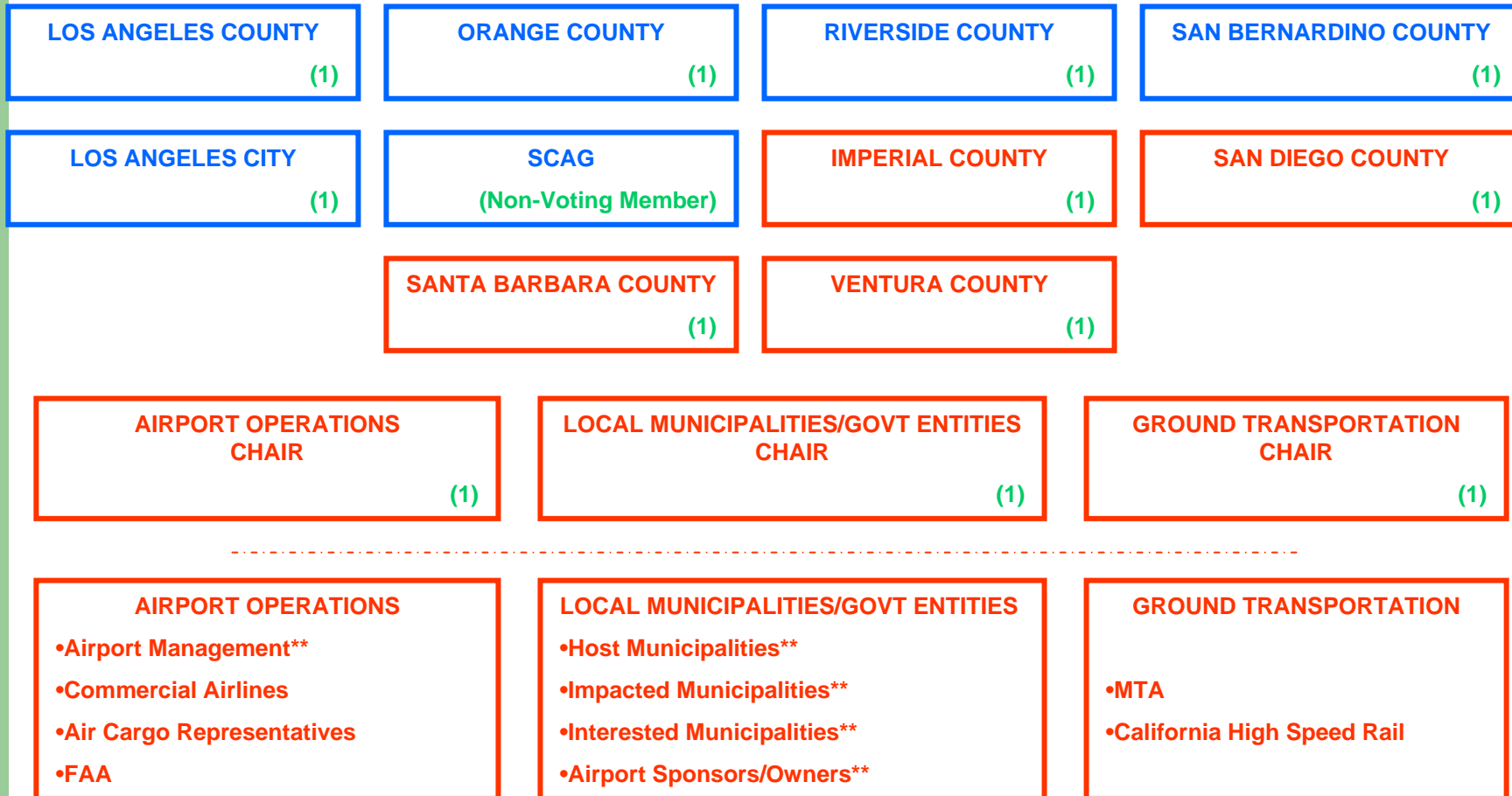
continued....

- The Chairperson of each Standing Committee holds a voting seat on the Executive Committee
- The Vice Chair of each Standing Committee functions as an alternate to the Chairperson on the Executive Committee
- The Chair and Vice Chair of each Standing Committee will be elected by their respective committee members

Option V –

Add Executive Board Members & Alternates

Add 3 Standing Committees with Technical & Associate Members**



Option V -

Technical Advisors/Experts

Technical Members of Standing Committees

- Membership may be drawn from technical fields to work on special issues
- No voting privileges on the Executive Committee
- No dues required to participate on these committees

Other JPA Issues

**Amount of Member
Dues**



Amount of Member Dues

Recommended that the Board increases dues as follows:

- Voting Board members annual dues are raised from \$20,000 to \$_____
- Non-voting Board members annual dues are not required
- Associate members annual dues are raised from \$500 to \$_____
- Technical Advisors/Expert, such as FAA, MTA, annual dues are not required

*Dues are recommended to increase every year or every two years based on CPI index by a vote of the majority of the voting members

Board Voting Requirements

- The current JPA establishes a quorum as a majority of voting members
- The current JPA provides that certain actions of the Board must be taken by unanimous vote:
 - Act to terminate SCRAA
 - Amend the JPA
 - Add new voting Board members

Board Voting Requirements

continued...

- The Board may wish to reconsider and refine these requirements:
 - Action to add new voting Board member
 - Super-Majority Vote
 - Majority Vote
 - Unanimous vote of all voting Board members (current JPA provision)
 - Action to add non-voting Board members/Associate members
 - Super-Majority Vote
 - Majority Vote – current JPA provision for associate members
 - Unanimous vote of all Board members

Board Voting Requirements

continued....

- The Board may wish to reconsider and refine these requirements:
 - Adoption of the regional aviation plan or other major SCRAA planning actions
 - Super-Majority Vote
 - Majority of Vote
 - Unanimous vote of all Board members
 - Action on all other matters of the Board such as hiring staff, contracts, applications for grants, etc.
 - Majority of the members present
 - By a majority of all members (current JPA provision)

Withdrawal of SCRAA Members

Recommended

- That the Board extend the written withdrawal notice required for unilateral withdrawal by a voting member:
 - 180 days
 - One year